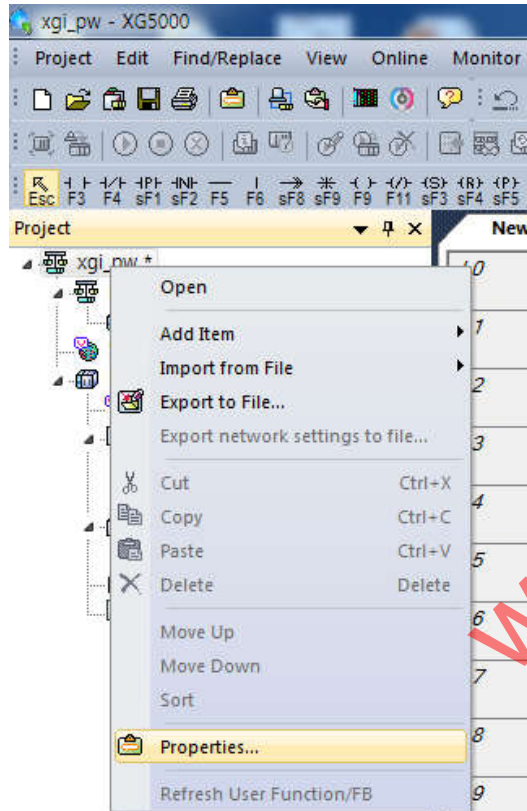


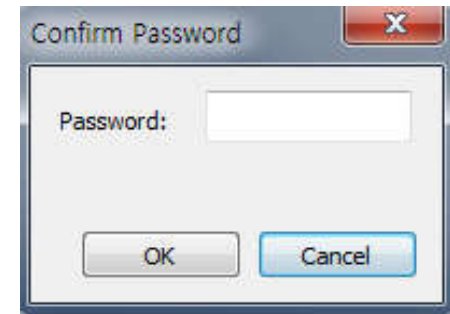
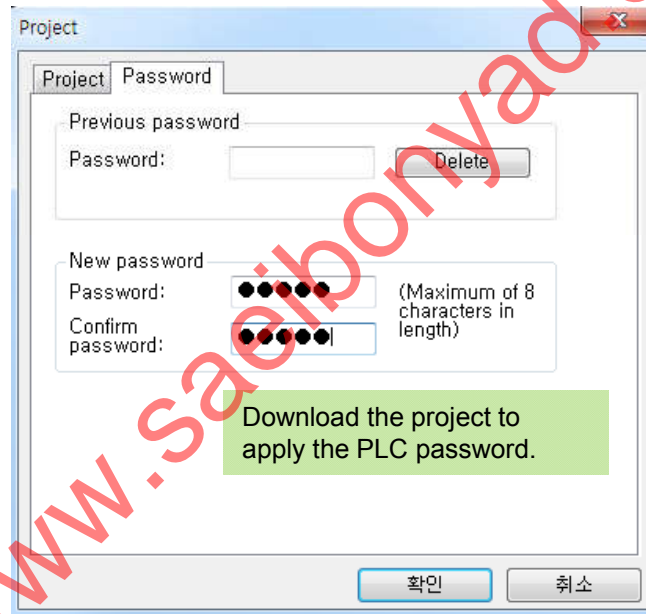
Q. I want to protect my PLC program in XG5000. How can I do that? And is there any advice to set the password?

1) Project Password setting – It is just the project password. So if you forget the project password, just do the 'Project – open from PLC'. Then you can set again the password or remove the previous password.

[Setting]



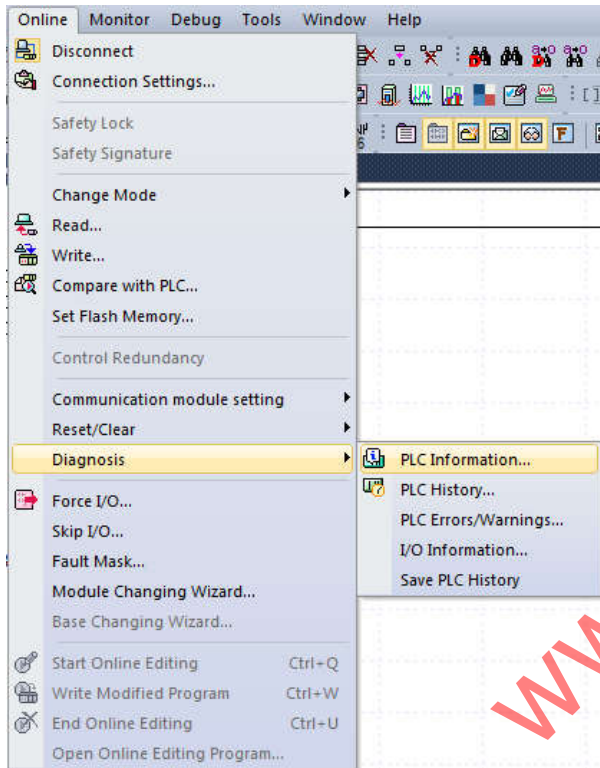
[Connection]



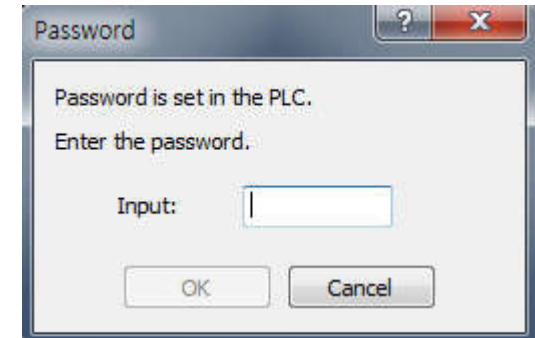
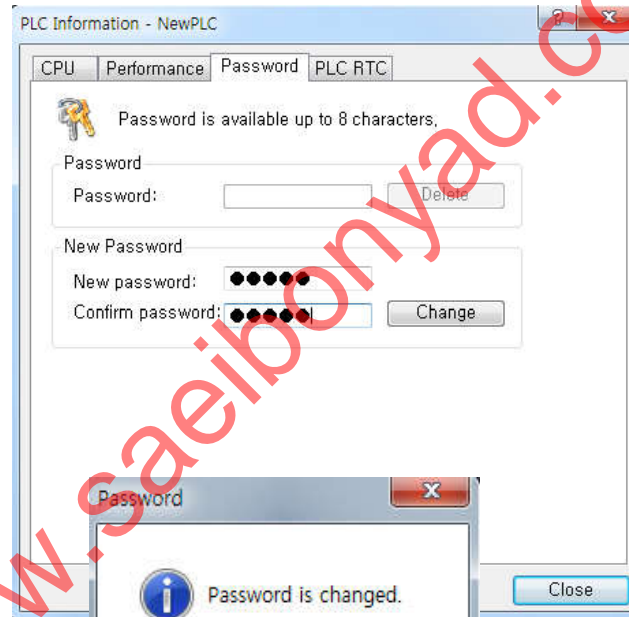
※ Capital and small letter which is used for password is classified.

2) PLC password setting – This setting option should be used carefully. Because when PLC has the password and if the user forget that, there is no way to connect the PLC. At that time, Factory reset is the only way to connect the PLC.

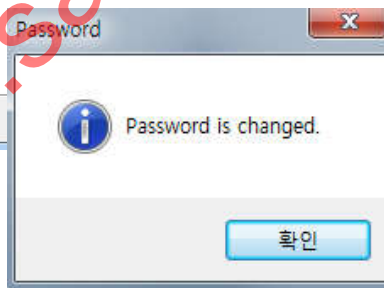
[Setting]



[Connection]

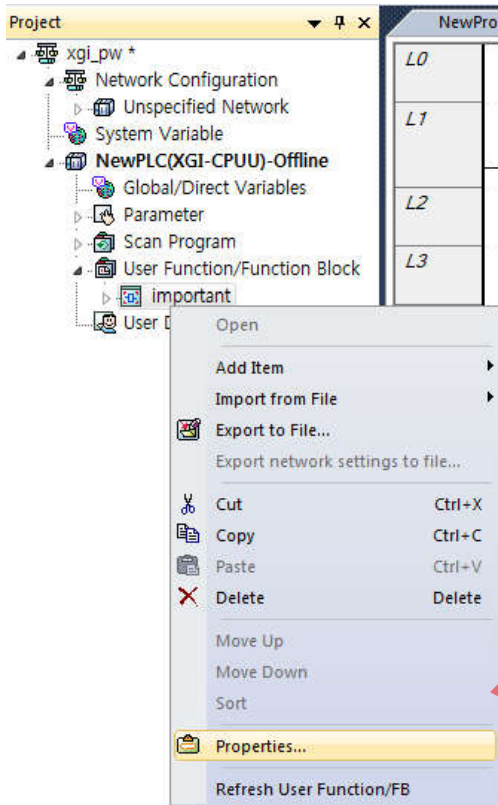


※ Capital and small letter which is used for password is classified.

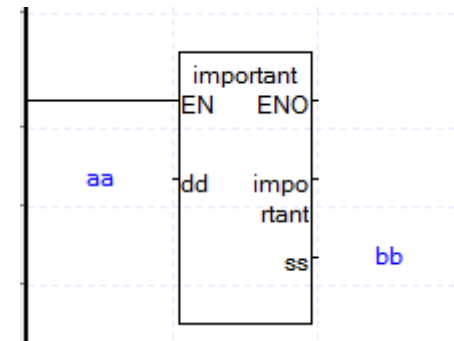
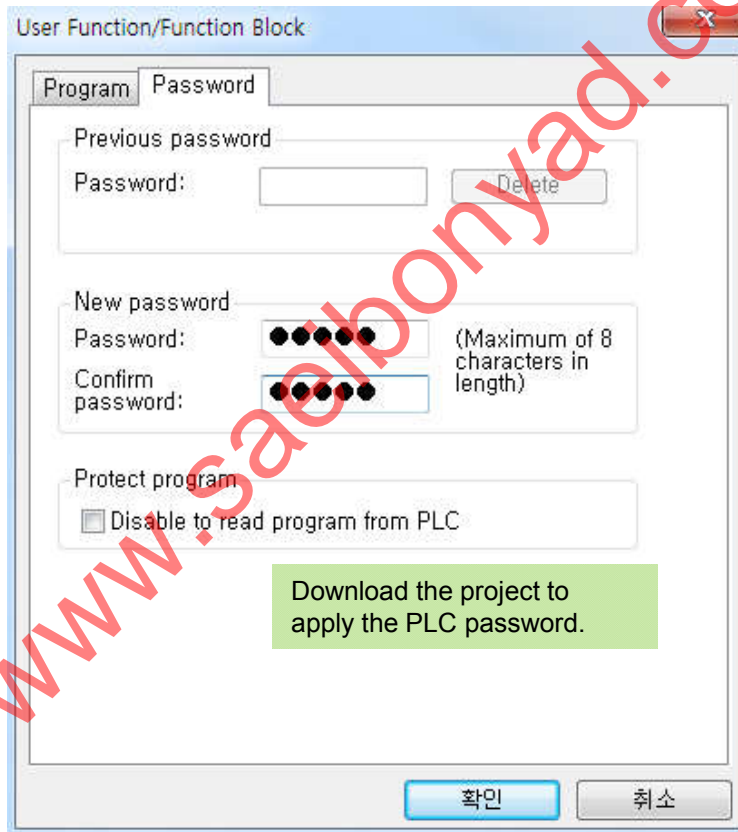
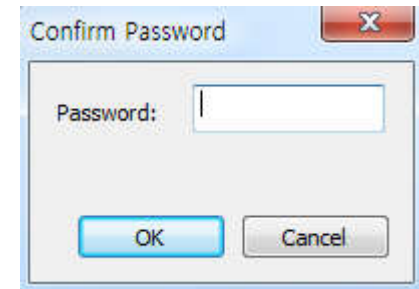


3) User Function / Function Block password – When the user wants to protect their own program, user function/function block password setting is appropriate. If the user doesn't know the password, still can use the 'user function/function block'. But it is not allowed to open the user function/function block to check the program.

[Setting]

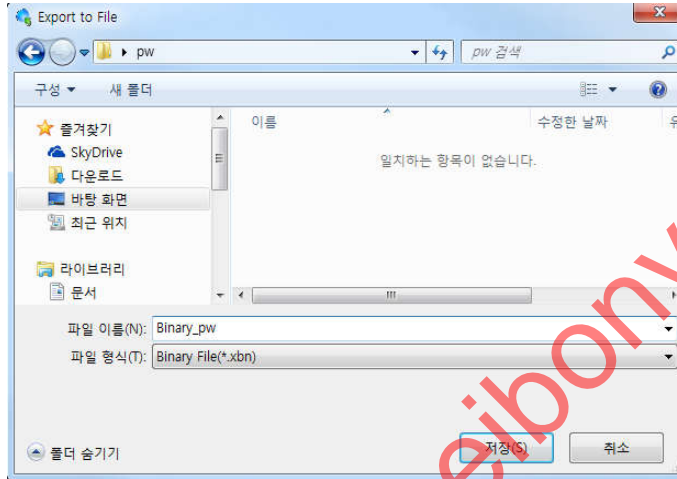
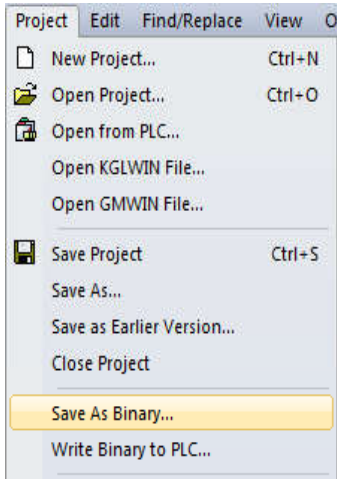


[Connection]



3) Save as Binary – After programming, we can make the program file to binary file(.xbn). Binary file cannot be edited, and cannot be opened as PLC program. This file only can be downloaded to PLC directly.

[Setting]



[Download]

